



W
WHITES

7 Charles Street, Salisbury, SP2 7AW

£1,100 PCM

About The Property

Redecorated two bedroom semi-detached home close to Salisbury city centre and railway station, featuring off road parking, enclosed courtyard garden and well-presented accommodation throughout.

Accommodation comprises:

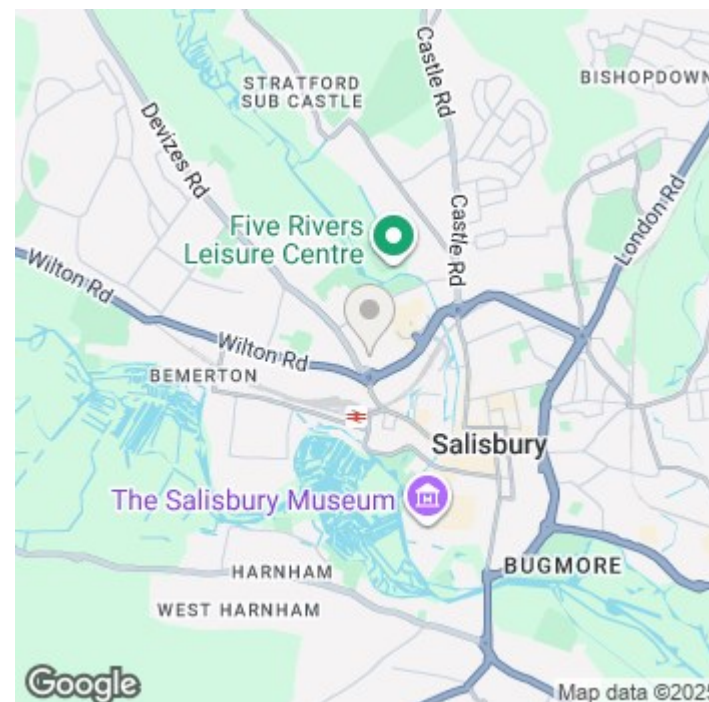
Entrance hall into sitting room with laminate flooring, decorative fireplace and sliding patio doors opening onto the rear garden. Fitted kitchen with oven and gas hob, space for a fridge/freezer and washing machine. .

Upstairs; bedroom one, double with fitted wardrobes. Bedroom two, large single/study. Bathroom with white suite and mixer shower over the bath.

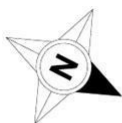
Outside; enclosed rear garden with paved patio area.

The property is offered unfurnished and benefits from gas central heating and double glazing with an EPC rating of C.

- Situated close to the city centre and railway station.
- Living room with doors to garden.
- Modern fitted kitchen.
- Two bedrooms.
- Bathroom with shower over the bath.
- Enclosed, paved courtyard garden.
- Off road parking for one car
- Gas central heating
- Double glazing
- EPC rating band C



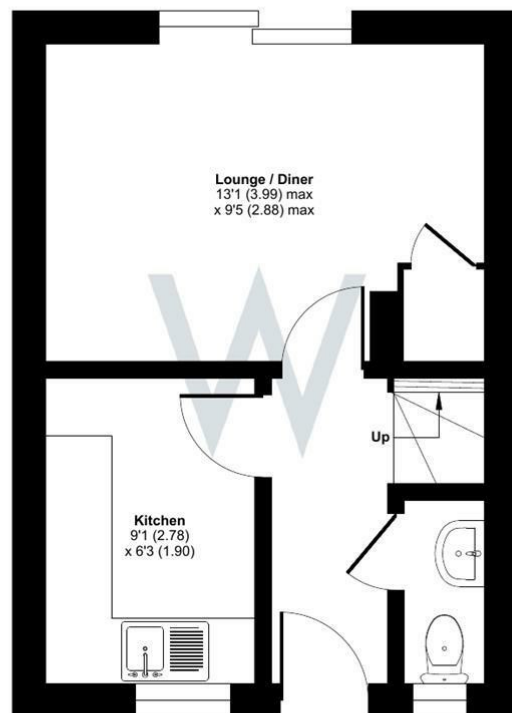




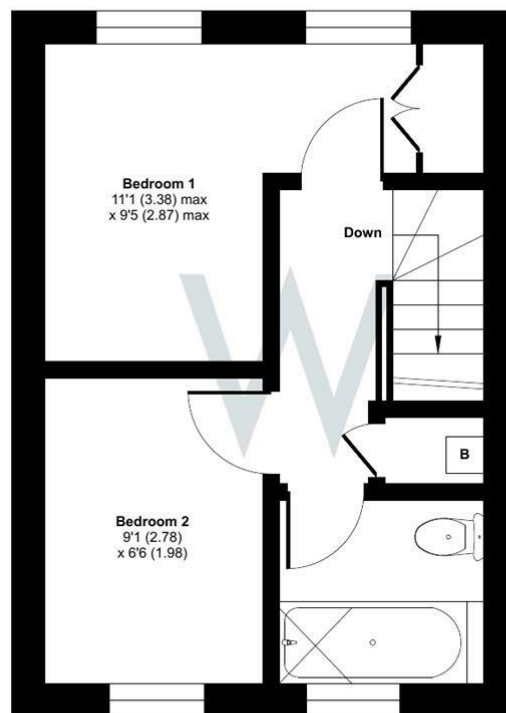
Charles Street, Salisbury, SP2

Approximate Area = 500 sq ft / 46.4 sq m

For identification only - Not to scale



GROUND FLOOR



FIRST FLOOR

Floor plan produced in accordance with RICS Property Measurement Standards incorporating International Property Measurement Standards (IPMS2 Residential). © nchecom 2025. Produced for H W White Ltd. REF: 1388181



Further Information

Let available date: 9th January 2026
NB: This date is provisional and will only be confirmed once referencing has been successfully completed.

Property type: House - Semi-Detached

Furnish type: Unfurnished

Deposit: £1,265

Local authority: Wiltshire Council

Council Tax: Band C

EPC: C(72)

Energy Efficiency Rating

	Current	Potential
Very energy efficient - lower running costs		
(92 plus) A		
(81-91) B		
(69-80) C	72	78
(55-68) D		
(39-54) E		
(21-38) F		
(1-20) G		
Not energy efficient - higher running costs		
England & Wales	EU Directive 2002/91/EC	